

14235

The Upper-Mid West's Premier Rep Agency



 **FOURMATIONSALES**

HVAC STOCKING PRODUCTS 2024



FOURMATIONSALES
PLUMBING, HEATING AND MECHANICAL INDUSTRIES

www.fourmationsales.com

14235 Northdale Blvd | Suite 100
Rogers, MN 55374

(763) 420-6900

join the conversation





TABLE OF CONTENTS

SERVING THE PLUMBING, HEATING AND MECHANICAL INDUSTRIES

FourMation Sales represents the top product lines for the plumbing, heating and mechanical industries in Minnesota MN, Wisconsin WI, North Dakota ND, South Dakota SD, UP of Michigan.

XVers L by Raypak™

The XVers L is available in sizes from 399 to 850 MBTUH which expands our reliable XVers family of boilers

03

Boilers from IBC®

Commercial and residential boilers

04

HVAC and Mechanical from BoilerMag®

Performance systems for residential, light commercial, and commercial properties

06

HVAC and Mechanical from Armstrong®

Recirculation pumps, heat exchangers, expansion tanks, air separators

07

System Feeders from Axiom Industries®

Specialty Products for Hydronic Systems

08

ECCO Polypropylene Vent™

Residential / Commercial Polypropylene Venting Products

13

XVERS-L™

399 MBTUH - 850 MBTUH

H 97.2-98% Efficiency

Learn more about XVERS L boilers at Raypak.com

Stocking at multiple factory locations across the US. Usually ships within 24-48 hours. Reach out for availability.

Model Number	BTU Input	Description
XVers H7-406L	399,000	SS Fire Tube HX, NG/LP
XVers H7-506L	500,000	SS Fire Tube HX, NG/LP
XVers H7-606L	600,000	SS Fire Tube HX, NG/LP
XVers H7-725L	725,000	SS Fire Tube HX, NG/LP
XVers H7-856L	850,000	SS Fire Tube HX, NG/LP

Sleek Design



- Multi-function status light provides a quick visual indication of the boiler's status at a distance while doubling as a service light
- Forklift and pallet jack accessible base for convenient transportation and installation

Maximum Performance



- Corrosion-resistant stainless steel fire tube heat exchanger for maximum efficiency and reliability
- Up to 10:1 turndown

Installation Flexibility



- Can be installed as primary or primary/secondary piping
- Multiple vent material options: PVC, CPVC, polypropylene, or stainless steel
- Compact, streamlined design and zero side clearance requirements for easy configuration based on your needs

Intelligent Controls



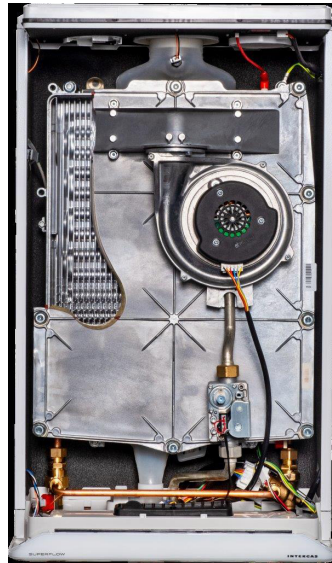
- VERSA IC controls with LCD touchscreen display and Raymote access
- Cascade up to 8 boilers in parallel or sequential modulation modes to optimize performance
- Built-in, automatic protection for more uptime and reliability you can depend on



Model H7	MBTUH (kW/h)		Turn down	AHRI Thermal Efficiency	Dimensions - Inches (mm)				Operating Weight lbs. (kg)	Water Content Gal (L)
	Input	Output			Water Inlet/Outlet NPT	Flue Ø	Air Intake Ø	Gas Connection NPT		
406L	399 (117)	391 (115)	10 to 1	98.00%	2 (50)	4 (100)	4 (100)	1 (25)	547 (248)	13 (50)
506L	500 (147)	489 (143)	10 to 1	97.80%	2 (50)	4 (100)	4 (100)	1 (25)	611 (277)	12 (46)
606L	600 (176)	586 (172)	7 to 1	97.60%	2 (50)	4 (100)	4 (100)	1 1/4 (31)	603 (274)	12 (46)
726L	725 (213)	705 (207)	7 to 1	97.30%	2.5 (65)	6 (152)	6 (152)	1 1/4 (31)	710 (322)	17 (66)
856L	850 (250)	826 (242)	7 to 1	97.20%	2.5 (65)	6 (152)	6 (152)	1 1/4 (31)	720 (326)	16 (62)



Superflow



Inside View



Manifold

Model Number	BTU Input	Description
SFC-125	125,000	Superflow Tankless Water Heater 3.4 GPM @ 70F Rise
SFT-199	199,000	Superflow Tankless Water Heater 5.2 GPM @ 70F Rise
EZ Pipe Manifold		SFC-125 - 251-063

The **SFT Superflow** contains cutting-edge, solid-state electronics to control its gas valve, fan and ignition. By doing so, we've succeeded in reducing the number of moving parts, made servicing simple and increased reliability.

SFC-125

- **5 Moving Parts**
- Fan, Bypass Valve, Pump, Gas Valve, Damper
- 2 independent copper waterways embedded in a cast aluminum block
- 95% AFUE ASME rated head exchanger
- High-Efficiency variable speed (ECM) pump come standard
- Illuminated Touch Screen control display panel

[CLICK FOR MORE](#)

SFT-199

- **4 Moving Parts**
- Fan, Mixing Valve, Gas Valve, Damper
- Single Pass fully condensing one piece heat exchanger
- Fully integrated copper waterways
- Up to 5.2 GPM continuous at 70°F rise

[CLICK FOR MORE](#)



Interstor



Buffer Tank

Model Number	BTU Input	Description
BTI 30	30 Gallon	SS Indirect Fired Water Heater
BTI 40	40 Gallon	SS Indirect Fired Water Heater
BTI 55	55 Gallon	SS Indirect Fired Water Heater
BTI 65	65 Gallon	SS Indirect Fired Water Heater
BTI 80 MAX	80 Gallon	SS Indirect Fired Water Heater
IBT 25		25 Gallon Buffer Tank

BTI Tanks

- Stainless steel construction
- High capacity smooth wall coil
- 2" polystyrene foam insulation
- Standard Aquastat & 10KΩ temperature sensor included

[CLICK FOR MORE](#)

Buffer Tanks

- 444 grade stainless steel
- 316L grade stainless steel connections
- 1 1/2" NPT connections
- 2" high density foam insulation

[CLICK FOR MORE](#)

P 9073 (240-033)
Optional Secondary Loop Sensor 10K

MODEL	MAX. FIRST HOUR RATING US GAL/Hr @ 135F	CONTINUOUS RATING US GAL/Hr @ 135F	BOILER OUTPUT REQUIRED BTU/HR	BOILER WATER FLOW GPM	PRESSURE DROP THROUGH COIL (FT. WATER)
Based on 180°F boiler supply & 58°F entering cold water					
BTI 30	159	137	88,000	8	3
BTI 40	188	156	100,000	8	3
BTI 55	200	156	100,000	8	3
BTI 65	325	269	172,000	13	4
BTI 80 - MAX	453	393	251,000	15	7



Model Number	BTU Input	Description
BM/R	3/4" - 1 1/4"	Magnetic Separator (15 GPM)
BMXL/NPT	1 1/2"	Magnetic Separator (28 GPM)
BMXT150	2"	Magnetic Separator (79 GPM)
BMXT200/3/ANSI	3"	Magnetic Separator (229 GPM)
BMXT200/ANSI	4'	Magnetic Separator (308 GPM)

Residential Unit BM/R

- Install/Clean in minutes, protects for years
- Dual flow technology – filters twice on one pass
- Includes automatic air vent to automatically release trapped air
- Guaranteed no block
- Removes both magnetic and non-magnetic debris
- Fits in line and has 360° adjustment
- Easy access for chemical dosing
- Features 1" NPT (1.25" NPT adaptors included) or 1" Press Connections

[CLICK FOR MORE](#)

BMXL

- Easy to install and clean
- Fits standard 1 1/2" connections
- Dual flow technology – filters twice on one pass
- Guaranteed no block
- Removes both magnetic and non-magnetic debris
- High collection capacity
- Comes with BoilerMag 3 year warranty

[CLICK FOR MORE](#)

BMXT

- Easy to install and maintain
- Maintains optimum heating performance
- Range available from 1.5" to 12"
- Operating pressure up to 174 PSI
- High intensity magnetic rods capture even the smallest particles
- Large collection capacity
- Comes with BoilerMag 10 year warranty
- No on-going running costs
- Premium quality manufacture
- Automatic air vent
- Full flow filter

[CLICK FOR MORE](#)



**Astro 2
Circulator**



Flex Flange

Model Number	Description
110223-326	Astro 210ci flg
110223-305	Astro 230ci flg
110223-320	Astro 280ci flg
110223-328	Astro 290ci flg
110124-201	Flex Flange 3/4" NPT with Check Valve
110124-202	Flex Flange 1" NPT with Check Valve
110124-052	Flange Isolation 1 1/4" Sweat

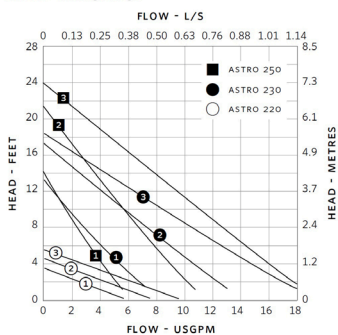
Astro 2 Circulators

[CLICK FOR MORE](#)

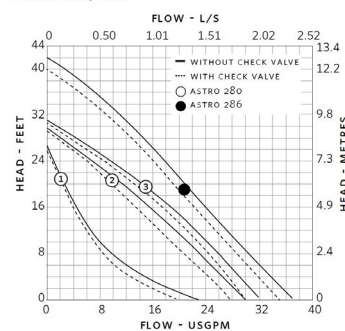
Flex Flange

[CLICK FOR MORE](#)

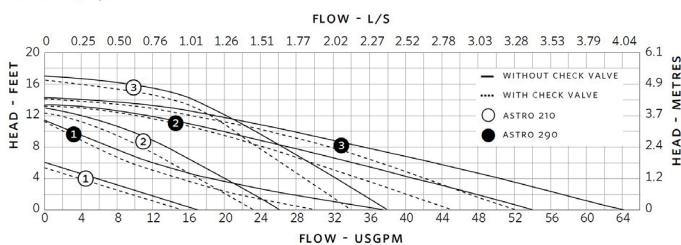
ASTRO 220, 230, 250



ASTRO 280, 286



ASTRO 210, 290



Applications

- Flex Flanges are used in pairs to connect circulating pumps in hydronic systems

Description

- Designed to allow maximum installation flexibility regardless of pump flange orientation
- Available with a spring check valve to prevent the heating medium flowing in the wrong direction in the event of gravity circulation
- Integrates a 2-bolt flange all-in-one connection with a full-port ball valve

Materials

- Valve and Stem: Brass, Flange: Cast Iron/Chromate
- Ball: Chrome plated brass, Stem O-Rings: Buna N
- Seat: PTFE

Performance Range

- Max working pressure: 150 psig (10.3 bar)

Temperature

- Max operating temp: 250°F (121°C)

Size

- 1/2" - 1 1/2" inches



Exchanger Cleaners



Inhibitor



Demineralizer

Model Number	Description
AXTH-CF9AL	Fire Side Aluminum Heat Exchanger Cleaner
AXTH-CFSTEEL-1L	Fire Side Stainless Steel Heat Exchanger Cleaner
PuroPAK-P	PuroPak + Inhibitor
PUROPAL-1	Demineralizer w/Color Changing Resin

Combustion Side Cleaners

Suitable for all kinds of closed-loop hydronic heating and cooling systems: traditional hydronic heating system, chilled water systems, and geothermal systems.

[CLICK FOR MORE](#)

PuroPak (Hydronic Water Quality Kit)

Axiom Water Demineralizers provide a simple solution to ensure high-quality water is used in closed-loop hydronic systems. Demineralized water meets the strict water quality requirements from boiler and glycol manufacturers.

- PuroPak-P c/w PuroPal-1 (Demineralizer) and Protect-1 (Inhibitor)
- Cleans sludge and metal oxide formations from existing systems
- Demineralize system fill water
- Provides lasting protection against corrosion and scale formations

[CLICK FOR MORE](#)

PuroPal Demineralizers

One PuroPal-1 cartridge treats approximately 65 USG (based on inlet water @200ppm)

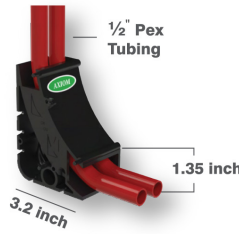
Provide a simple solution to assure high-quality water is used in closed-loop hydronic systems. Marginal water quality can lead to scaling, sediment deposits, sludge, and increased corrosion rates. Demineralizers prevent valuable metal components in closed-loop hydronic systems from corroding and scaling.

- Demineralized water meets the strict water quality requirements from boiler and glycol manufacturers
- Removes all the aggressive salts such as chlorides, sulphates, and nitrates which specifically attack metals like stainless steel, copper, and aluminum
- Removes scale producing ions like calcium and magnesium that damage components and block heat transfer
- Lowers electrical conductivity, which reduces corrosion
- The PuroPal-300 media changes from blue to beige when spent
- An economical and convenient alternative to pre-blended glycol

[CLICK FOR MORE](#)



Tubing Organizer w/End Plate



Pex-Pal Jr



Wall Bracket + Pro Kit

Model Number	Description
PEX-Pal	Pex-Pal Tubing Organizer Each (Box Quantity of 40)
EP10	Pex-Pal Tubing Organizer End Plate Each (Box Quantity of 10)
PEX-Jr	Pex-Pal Jr Tubing Organizer - Ideal for Over-Pour Applications
HN-3	Expansion Tank Wall Bracket + Pro Kit

Pex-Pal Tubing Organizer

[CLICK FOR MORE](#)

The 'PEX Pal' is a tubing collector and organizer for radiant heating in-floor installations. The modular two-channel design positions the supply and return pipes at the correct spacing required for connection to the manifolds.

- Two-Channel stand-up bracket organizes and protects tubing at the poured floor surface
- Each module keeps the supply and return pipes separate
- Modules are easily press fit together to match the manifold loops
- Installer can add as many modules required to match the number of loops
- Mounts to decking, rebar, ready-rod, temporary manifold support or wooden forms
- Reversibility of each module allows individual zones to be piped from opposite directions
- Maintains a larger bend radius than manufacturers' recommended minimum for 3/4" and smaller PEX tubing
- Easy installations, maintains organizations, and cuts down installation times
- Constructed of high impact strength plastic

Pex-Pal Jr.

- Organizes & protects tubing at the poured floor surface
- Ideal for over-pour radiant applications
- Multiple modules press-fit together to match the number of loops on the manifold
- Each module fits supply & return tube
- Outlets can be reversed for manifold locations with piping in opposite directions
- Constructed of co-polymer polypropylene
- Designed to maintain manufacturers' recommended minimum bend radius
- Enclosed side
- Fits inside 2x4 interior wall

Expansion Tank Wall Bracket + Pro Kit

[CLICK FOR MORE](#)

- Securely mount critical hydronic components
- Provides means for easy servicing of the expansion tank
- Powder-coated for a professional finish
- Robust welded steel bracket
- Comes fully assembled
- Includes (2) 1/2" ball valves, 1 manual air vent, and 1 ETV Service Valve and 1 Pressure Guage for accessory components

Connection Options

- 1/2" FNPT Expansion Tank Connection with 3-way ETV ball valve
- 1/2" FNPT Fill/Feeder Inlet Connection with ball valve
- 1/2" FNPT System Connection with ball valve
- 1/4" Manual Air Vent
- 1/4" FNPT Pressure Guage Connection



Digital Mini Feeder



System Mini Feeder



Hydronic System Feeder



Low Level Alarm Panel

Model Number	Description
DMF150	Digital Mini Feeder - 4.5USG, 0-45psi
MF200	System Mini Feeder - 6USG, 10-25psi
DMF300	Digital Mini Feeder - 17USG, 0-45psi
SF100	Packaged Hydronic System Feeder 55USG, 10-55psi
RIA 10-1-SAA	Low Level Alarm Panel (SF & MF Models)

Digital Mini Feeder (DMF)

- Digital Controls
- Adjustable psi set points
- Digital alarm contacts
- 4.5 USG or 17 USG reservoir tanks
- Comes with wall bracket

[CLICK FOR MORE](#)

System Feeder (SF)

- Adjustable psi set points
- No contact with potable water, eliminates need for backflow prevention
- 55 USG reservoir tank
- Diverter valve allows easy air purge on start up and fluid mixing
- Low fluid level shut off switch

[CLICK FOR MORE](#)

Mini Feeder (MF)

- Adjustable psi set points
- Low fluid level shut off switch
- 6 USG reservoir tank

[CLICK FOR MORE](#)

Low Level Alarm Panel

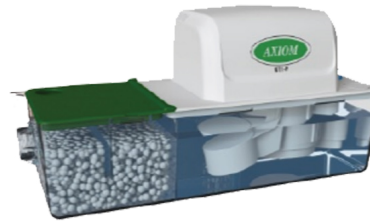
- Compatible with MF, DMF and SF models
- On low level condition the unit pump will be disabled and an audible alarm will sound

[CLICK FOR MORE](#)

Neutralizers



NutraPal



NutraPump



NutraPro

Model Number	Description
NC-1	NeutraPal Full Kit (400kBTU/hr, 1.6 USG/hr)
NC-1S	NeutraPal Hard Pipe Kit (400kBTU/hr, 1.6 USG/hr)
NC-1W	NeutraPal Hard Vert Wall Mount (400kBTU/hr, 1.6 USG/hr)
NC-2	NeutraPal Full Kit (1MBTU/hr, 4.0 USG/hr)
NC-2S	NeutraPal Hard Pipe Kit (1MBTU/hr, 4.0 USG/hr)
NT-15	NeutraPro Low Profile (3 MBTU/hr, 20 USG/hr)
NT-25	NeutraPro High Capacity (7MBTU/hr, 45 USG/hr)
NT1-P	NeutraPump Full Kit (500kBTU, 1.9 G/hr)
NM-1	NC-1, NC-2 Replacement Media 2lbs
NM-1 Bulk	NC-1, NC-2 Bulk Replacement Media 35lbs
NM-15	NT15 Replacement Media 30lbs
NM-25	NT25 Replacement Media 40lbs
NM-1P	NT1-P Replacement Media 2lbs

'NeutraPal' Condensate Neutralization Kit

Ideal for neutralizing condensate from condensing boilers and furnaces operating on natural gas or propane. The NeutraPal will raise the pH of the condensate to a more neutral level before it is discharged to drain. The condensate is acidic and has the potential to harm the environment and the sewer system.

[CLICK FOR MORE](#)

'NeutraPro' Condensate Neutralization Tank

The NT15 is ideal for neutralizing condensate from condensing boilers and furnaces operating on natural gas or propane. The condensate produced by these appliances is acidic and has the potential to harm the environment and the sewer system. The NT15 will neutralize the condensate to a more neutral pH level before it is discharged to drain.

[CLICK FOR MORE](#)

'NeutraPump' Condensate Neutralization Tank With Pump

The NT1-P is ideal for installations that require both condensate removal and neutralization.

[CLICK FOR MORE](#)

The condensate produced by gas fired condensing appliances is acidic and has the potential to harm the environment and the sewer system.



Chemical Bypass Feeder



SFP-10



SFP-20

Model Number	Description
CBF-2	Chemical Bypass Feeder - 2USG (Wall Bracket)
CBF-5	Chemical Bypass Feeder - 5USG
SFP-10	3/4" NPT, 10" Filter Housing, Full Kit
SFP-20	1" NPT, 20" Filter Housing, Full Kit
SFP-10w-5M	10" filter replacement, 5-micron (30 per box)
SFP-10-25M	10" filter replacement, 25-micron (30 per box)
SFP-20-5M	20" filter replacement, 5-micron (15 per box)
SFP-20-25M	20" filter replacement, 25-micron (15 per box)

Chemical By Pass Feeder

Axiom's Chemical By-Pass Feeder delivers chemicals to any closed loop system. Maintaining a chemically balanced hydronic system has never been easier.

- Allows for safe and easy chemical dosing.
- Ball valves for easy chemical dosing and pot feeder isolation
- Graduated funnel with stainless steel filter for clean, accurate, and mess free chemical addition
- Pressure vessel and fittings made with brass and Carbon steel
- 2 Gallon (7.6 litre) and 5 Gallon (18.9 litre) models available (Comes with Wall Bracket)

[CLICK FOR MORE](#)

SFP Series Filter Housings

Axiom's Hydronic Filter Housing delivers effective ongoing protection against the damaging effects of debris in all types of heating and cooling systems. Maintaining a clean hydronic system fluid has never been easier.

- Double O-ring on filter housing for reliable leak free cartridge replacements
- Ball valve drain with hose connection and cap ensures safe fluid handling
- Filter vessel can be used for chemical dosing. Up to 0.8 Gallon (3.0 litre)
- Stainless Steel construction
- Reduces equipment maintenance cost and extends system life

[CLICK FOR MORE](#)

Polypropylene Venting



Polypropylene Venting

Stock #	Description
190200	272PPP 2X72 PP PIPE
190203	236PPP 2X36 PP PIPE
190204	224PPP 2X24 PP PIPE
190205	224PPPB 2X24 PP PIPE UV
190206	212PPP 2X12 PP PIPE
190207	212PPPB 2X12 PP PIPE UV
190211	287PEL 2X87 PP ELBOW
190212	287PELB 2X87 PP ELBOW UV
190213	245PEL 2X45 PP ELBOW
190214	245PELB 2X45 PP ELBOW UV
190218	2PPAC 2 PP ADAPTER CLAMP
190220	2PPLC 2 PP LOCK CLAMP
190221	2PPB 2 PP BRACKET
190222	2PPADJ 2 PP ADJ PIPE
190223	2PPTP 2 PP TEST PORT
190224	2PPCD 2 PP DRAIN
190225	2PPT 2 PP TEE
190226	203PINC PP 2 TO 3 INCREASER
190227	302PRED PP 3 TO 2 REDUCER
190229	2PPCC 2 PP CHIM CAP



Polypropylene Gasket Clamps

Stock #	Description
190230	2PPGR 2 PP RIGID GASKET
190232	2PPS 2 PP RIGID SPACER (2PCS)
190233	2PPWTK 2 PP SW WALL TERM KIT
190234	2PPWG 2 PP WIRE SPRING GUARD
190235	2PPFBVC 2 PP FLEX B-VENT CAP
190236	2PPFK 2 PP FLEX KIT
190237	240PPF 2X40' PP FLEX
190238	280PPF 2X80' PP FLEX
190241	2PPFFA 2 PP FLEX FEM ADPT/W PLATE
190242	2PPFC 2 PP FLEX COUPLING
190243	2PPFP 2 PP FLEX PULLER
190244	2PPFRM 2 PP FLEX-RIGID MALE
190245	2PPSSG 2 PP SS GUARD
190246	2PPFS 2 PP FLEX SPACER (5PCS)
190247	2PPELCS 2 PP ELBOW CW SUPPORT
190255	2PPGF 2 PP FLEX GASKET
190283	24CHTK PP CONC HORIZ TERM KIT

Polypropylene Venting



Polypropylene Venting

Stock #	Description
190284	24CVTK PP CONC VERT TERM KIT
190288	24CWT 2/4 PP CONC HORIZ TERM
190289	2PPOB 2 PP OFFSET UV
190290	24CWTP 2/4 CONC WALL TERM PLT
190291	24PCB 2/4 PP CONC BRACKET
190292	24CWP 2/4 CONC WALL PLT
190293	24CSSWG 2/4 CONC SS WALL GRD
190294	CFF PP CONC FLAT FLASH
190295	24CVT 2/4 PP CONC VERT TERM
190296	2440VTE 2/4X40 CONC VERT EXT
190297	2420VTE 2/4X20 CONC VERT EXT
190298	CARF 25-45 CONC FLASH
190299	CFAF 0-25 CONC FLASH
190300	372PPP 3X72 PP PIPE
190303	336PPP 3X36 PP PIPE
190304	324PPP 3X24 PP PIPE
190305	324PPPB 3X24 PP PIPE UV
190306	312PPP 3X12 PP PIPE
190307	312PPPB 3X12 PP PIPE UV
190311	387PEL 3X87 PP ELBOW



Polypropylene Gasket Clamps

Stock #	Description
190312	387PELB 3X87 PP ELBOW UV
190313	345PEL 3X45 PP ELBOW
190314	345PELB 3X45 PP ELBOW UV
190318	3PPAC 3 PP ADAPTER CLAMP
190319	35PPAC 3/5 PP ADAPTER CLAMP
190320	3PPLC 3 PP LOCK CLAMP
190321	3PPB 3 PP BRACKET
190322	3PPADJ 3 PP ADJ PIPE
190323	3PPTP 3 PP TEST PORT
190324	3PPCD 3 PP DRAIN
190325	3PPT 3 PP TEE
190326	304PINC PP 3 TO 4 INCREASER
190327	403PRED PP 4 TO 3 REDUCER
190329	3PPCC 3 PP CHIM CAP
190330	3PPGR 3 PP RIGID GASKET
190332	3PPS 3 PP RIGID SPACER (2PCS)
190333	3PPWTK 3 PP SW WALL TERM KIT
190334	3PPWG 3 PP WIRE SPRING GUARD
190335	3PPFBVC 3 PP FLEX B-VENT CAP
190336	3PPFK 3 PP FLEX KIT

Polypropylene Venting



Polypropylene Venting



Polypropylene Gasket Clamps

Stock #	Description
190337	340PPF 3X40' PP FLEX
190338	380PPF 3X80' PP FLEX
190341	3PPFFA 3 PP FLEX FEM ADPT w/plate
190342	3PPFC 3 PP FLEX COUPLING
190343	3PPFP 3 PP FLEX PULLER
190344	3PPFRM 3 PP FLEX-RIGID MALE
190345	3PPSSG 3 PP SS GUARD
190346	3PPFS 3 PP FLEX SPACER (5PCS)
190347	3PPELCS 3 PP ELBOW CW SUPPORT
190355	3PPGF 3 PP FLEX GASKET
190383	35CHTK PP CONC HORIZ TERM KIT
190384	35CVTK PP CONC VERT TERM KIT
190388	35CWT 3/5 PP CONC HORIZ TERM
190389	3PPOB 3 PP OFFSET UV
190390	35CWTP 3/5 CONC WALL TERM PLT
190392	35CWP 3/5 CONC WALL PLT
190393	35CSSWG 3/5 CONC SS WALL GRD
190395	35CVT 3/5 PP CONC VERT TERM
190396	3540VTE 3/5X40 CONC VERT EXT
190397	3520VTE 3/5X20 CONC VERT EXT

Stock #	Description
190400	472PPP 4X72 PP PIPE
190403	436PPP 4X36 PP PIPE
190404	424PPP 4X24 PP PIPE
190406	412PPP 4X12 PP PIPE
190411	487PEL 4X87 PP ELBOW
190413	445PEL 4X45 PP ELBOW
190418	4PPAC 4 PP ADAPTER CLAMP
190419	46PPAC 4/6 PP ADAPTER CLAMP
190420	4PPLC 4 PP LOCK CLAMP
190421	4PPB 4 PP BRACKET
190422	4PPADJ 4 PP ADJ PIPE
190423	4PPTP 4PP TEST PORT
190424	1PPCD 4 PP DRAIN
190426	405PINC PP 4 TO 5 INCREASER
190427	504PRED PP 5 TO 4 REDUCER
190429	4PPCC 4 PP CHIM CAP
190430	4PPGR 4 PP RIGID GASKET
190431	487PIEL 4X87 PP INSP. ELBOW
190432	4PPS 4 PP RIGID SPACER (2PCS)
190436	4PPFK 4 PP FLEX KIT

Polypropylene Venting



Polypropylene Venting

Stock #	Description
190437	448PPF 4X48' PP FLEX
190438	480PPF 4X80' PP FLEX
190441	4PPFFA 4 PP FLEX FEM ADPT
190442	4PPFC 4 PP FLEX COUPLING
190443	4PPFP 4 PP FLEX PULLER
190444	4PPFRM 4 PP FLEX-RIGID MALE
190445	4PPSSG 4 PP SS GUARD
190446	4PPFS 4 PP FLEX SPACER (5PCS)
190447	4PPELCS 4 PP ELBOW CW SUPPORT
190455	4PPGF 4 PP FLEX GASKET
190483	46CHTK PP CONC HORIZ TERM KIT
190484	46CVTK PP CONC VERT TERM KIT
190485	46CI 110/150 - 4/6 PP CONC INC
190488	46CWT 4/6 PP CONC HORIZ TERM
190490	46CWTP 4/6 CONC WALL TERM PLT
190492	46CWP 4/6 CONC WALL PLT
190493	46CSSWG 4/6 CONC SS WALL GRD
190494	46CFF 4/6 PP CONC FLAT FLASH
190495	46CVT 4/6 PP CONC VERT TERM
190498	46CARF 4/6X25-45 CONC FLASH



Polypropylene Gasket Clamps

Stock #	Description
190500	572PPP 5X72 PP PIPE
190503	536PPP 5X36 PP PIPE
190504	524PPP 5X24 PP PIPE
190511	587PEL 5X87 PP ELBOW
190513	545PEL 5X45 PP ELBOW
190520	5PPLC 5 PP LOCK CLAMP
190521	5PPB 5 PP BRACKET
190526	506PINC PP 5 TO 6 INCREASER
190528	5PPVT 5 PP VERT TERM
190529	5PPCC 5 PP CHIM CAP
190594	5PPFF 5 PP FLAT FLASH
190600	672PPP 6X72 PP PIPE
190603	636PPP 6X36 PP PIPE
190604	624PPP 6X24 PP PIPE
190611	687PEL 6X87 PP ELBOW
190613	645PEL 6X45 PP ELBOW
190620	6PPLC 6 PP LOCK CLAMP
190621	6PPB 6 PP BRACKET
190626	608PINC PP 6 TO 8 INCREASER
190627	806PRED PP 8 TO 6 REDUCER

Polypropylene Venting



Polypropylene Venting

Stock #	Description
190628	6PPVT 6 PP VERT TERM
190629	6PPCC 6 PP CHIM CAP
190694	6PPFF 6 PP FLAT FLASH
190800	872PPP 8X72 PP PIPE
190803	836PPP 8X36 PP PIPE
190804	824PPP 8X24 PP PIPE
190811	887PEL 8X87 PP ELBOW
190813	845PEL 8X45 PP ELBOW
190820	8PPLC 8 PP LOCK CLAMP
190821	8PPB 8PP BRACKET
190828	8PPVT 8 PP VERT TERM
190829	8PPCC 8 PP CHIM CAP
190894	8PPFF 8 PP FLAT FLASH
190900	PPGL PP GASKET LUBE
190910	24022AD 2/4 TO 2-2 PP ADAPTER
190911	22024AD 2-2 TO 2/4 PP ADAPTER
190912	2PPSSAD 2 PP SS ADAPTER
190913	2PPVVC 2 PVC TO PP ADAPTER
190915	3302FCB 3/3 TO 2 FLX CHIM BEND
190916	2402FCB 2/4 TO 2 FLX CHIM BEND



Polypropylene Gasket Clamps

Stock #	Description
190917	202FCB 2 PP TO 2 FLX CHIM BEND
190920	35033AD 3/5 TO 3-3 PP ADAPTER
190921	33035AD 3-3 TO 3/5 PP ADAPTER
190922	3PPSSAD 3 PP SS ADAPTER
190923	3PPVVC 3 PVC TO PP ADAPTER
190925	3303FCB 3/3 TO 3 FLX CHIM BEND
190926	3503FCB 3/5 TO 3 FLX CHIM BEND
190927	303FCB 3 PP TO 3 FLX CHIM BEND
190930	46044AD 4/6 TO 4-4 PP ADAPTER
190931	44046AD 4-4 TO 4/6 PP ADAPTER
190932	4PPSSAD 4 PP SS ADAPTER
190933	4PPVVC 4 PVC to PP ADAPTER
190940	304CK 3 TO 4 CASCADE STARTER
190941	304EK 3 TO 4 EXT STARTER
190942	305CK 3 TO 5 CASCADE STARTER
190943	305EK 3 TO 5 EXT STARTER
190944	405CK 4 TO 5 CASCADE STARTER
190945	405EK 4 TO 5 EXT STARTER
190946	306CK 3 TO 6 CASCADE STARTER
190947	306EK 3 TO 6 EXT STARTER

Polypropylene Venting



Polypropylene Venting



Polypropylene Gasket Clamps

Stock #	Description
190948	406CK 4 TO 6 CASCADE STARTER
190949	406EK 4 TO 6 EXT STARTER
190950	408CK 4 TO 8 CASCADE STARTER
190951	408EK 4 TO 8 EXT STARTER

ECCO Polypropylene Vent™

Single Wall Rigid / Flex Venting

Ecco's Polypropylene venting product is specifically designed to vent oil, propane, and gas fired appliances.

- Lightweight
- Easy to install
- Fast install with snap-on locking clamp
- No mess! No glue or primer required
- Easily cut for quick modifications
- Flexible vent for easy navigation during chimney, and B-vent retrofit
- Made from 100% virgin polypropylene
- Fully recyclable at the end of useful life

[CLICK FOR MORE](#)

SPECIFICATIONS

Diameter Range	2" - 8"
Material	Fire-Retardant Polypropylene
Sealing & Locking System	Gasket with Locking Clamp
Gasket	EPDM Rubber - 20" WC
Certification	ULC S636 (Class 2C)
Maximum Temperature	230° F / 110° C
Fuel Types	Oil, Natural Gas, Propane
Appliance Category	2 and 4

TRAIN WITH THE EXPERTS



We Offer

Support in the Field
On-Site Training
Mobile Training Units
Virtual Training
PDH Credits

Book your training today with FourMation Sales. Talk to a team member today to see how FMS is the right fit for you.

[CLICK HERE TO LEARN MORE](#)



OTHER MANUFACTURERS WE REPRESENT



PERSONNEL & SALES TEAM

PERSONNEL AND OUTSIDE SALES



BILL MURPHY

bill@fourmationsales.com



COOPER GATES

cooper@fourmationsales.com



DEAN CORRIGAN

deanc@fourmationsales.com



DEAN ZUMWALDE

deanz@fourmationsales.com



JAY BAARS

jay@fourmationsales.com



JIM INGLE

jim@fourmationsales.com



MIKE MALESA

mike@fourmationsales.com



ROB WIDOWSKI

rob@fourmationsales.com



RYAN SWANSON

ryan@fourmation.com



TED SCHMELLING

ted@fourmation.com

INSIDE SALES



BRIAN FOY

brian@fourmationsales.com



CHRIS MARSCHEL

chrism@fourmationsales.com



JACOB SEVELIUS

jacob@fourmationsales.com



JANELLE MUTTERER

janelle@fourmationsales.com



NICK TROJAN

nick@fourmationsales.com



RYAN CROWELL

ryanc@fourmationsales.com



WILLY BASILL

willy@fourmationsales.com



FOURMATION SALES
PLUMBING, HEATING AND MECHANICAL INDUSTRIES

www.fourmationsales.com

14235 Northdale Blvd | Suite 100
Rogers, MN 55374

(763) 420-6900

